

REDMOND INDUSTRIAL LOTS



HIGHWAY 97

N 9TH STREET

E ANTLER AVE

601 E ANTLER AVENUE, REDMOND, OR



CONTENTS

page 3 PROPERTY OVERVIEW

page 6 UTILITY OVERVIEW

page 4 LOCATION OVERVIEW

page 7 LOT DETAIL

page 5 LAND/LOT OVERVIEW

page 8 MARKET OVERVIEW



TOM TAPIA, CCIM

PRINCIPAL

TOM@FRATCOMMERCIAL.COM

[c] 541-390-2900

[o] 541-306-4948

BRIAN FRATZKE, CCIM

PRINCIPAL

BRIAN@FRATCOMMERCIAL.COM

[c] 541-480-2526

[o] 541-306-4948

FRATZKECOMMERCIAL.COM

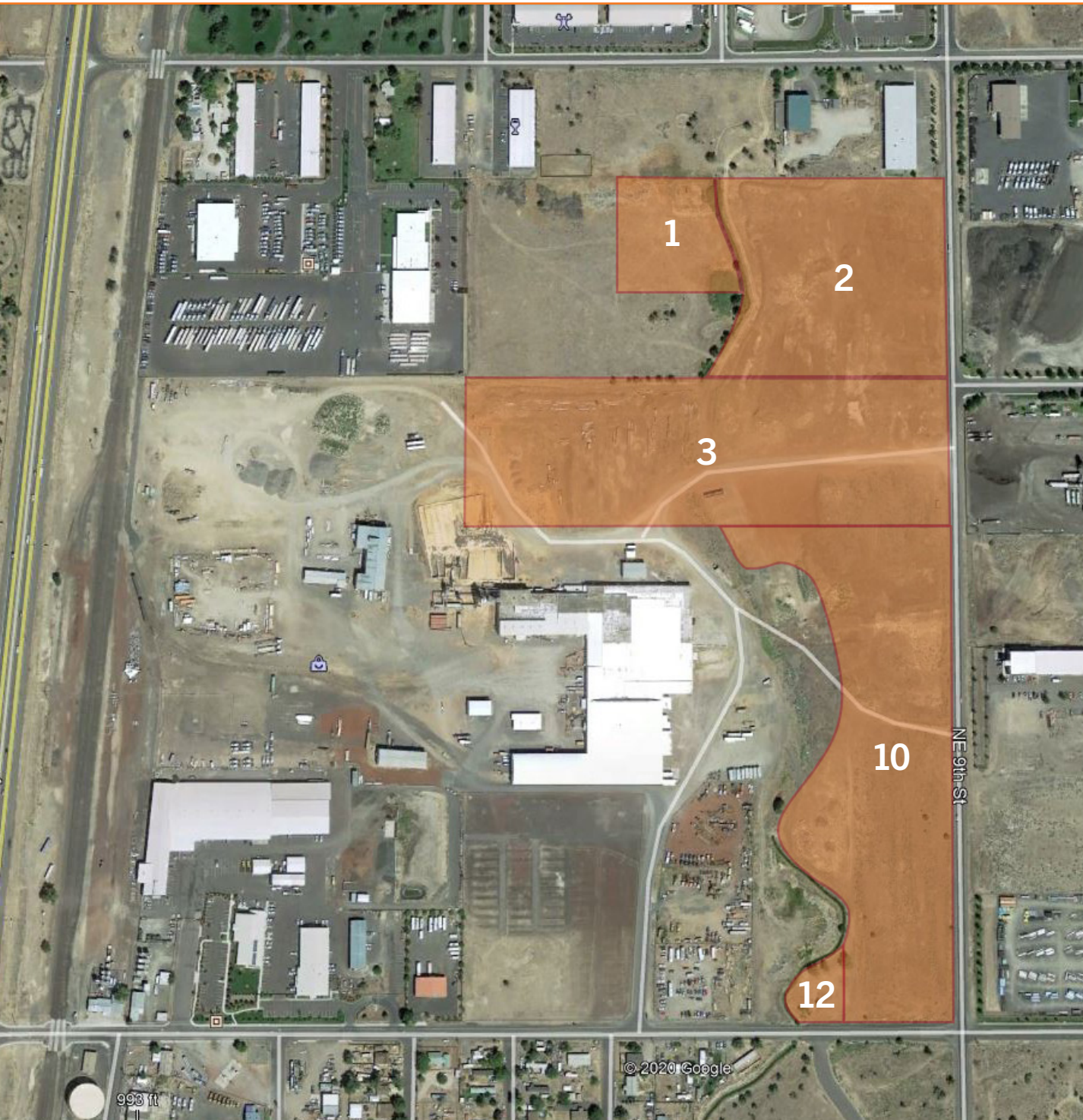
963 SW SIMPSON AVENUE | SUITE 220
BEND, OREGON 97702

541-306-4948



DISCLAIMER: This information is from sources we deem reliable, but for which we assume no liability. This is an exclusive listing. The information contained herein is given in confidence with the understanding that all negotiations pertaining to this property be handled through Fratzke Commercial Real Estate. All measurements are approximate.

LAND/LOT OVERVIEW



AVAILABLE LOTS

#	Tax Map	Tax Lot	Acreage	Zoning	Price
1	151310CA00	201	2.28	M2	\$3.50/SF
North end of the site.					
2	151310CA00	202	7.79	M2	\$3.75/SF
Northeast most tax lot with 9th Street bordering the east boundary.					
3	151310CA00	300	11.91	M2	\$4.00/SF
On the Northeast side of the site. 9th Street borders the east boundary directly across from Greenwood Avenue. Nicest, most symmetrical lot.					
10	151310CD00	100	11.48	M2	\$4.00/SF
Easterly most lot with 9th Street bordering the entire tax lot. Access is not confirmed.					
12	151310CD0	1101	0.45	M2	\$3.50/SF
Smallest tax lot in Southeast corner of property.					

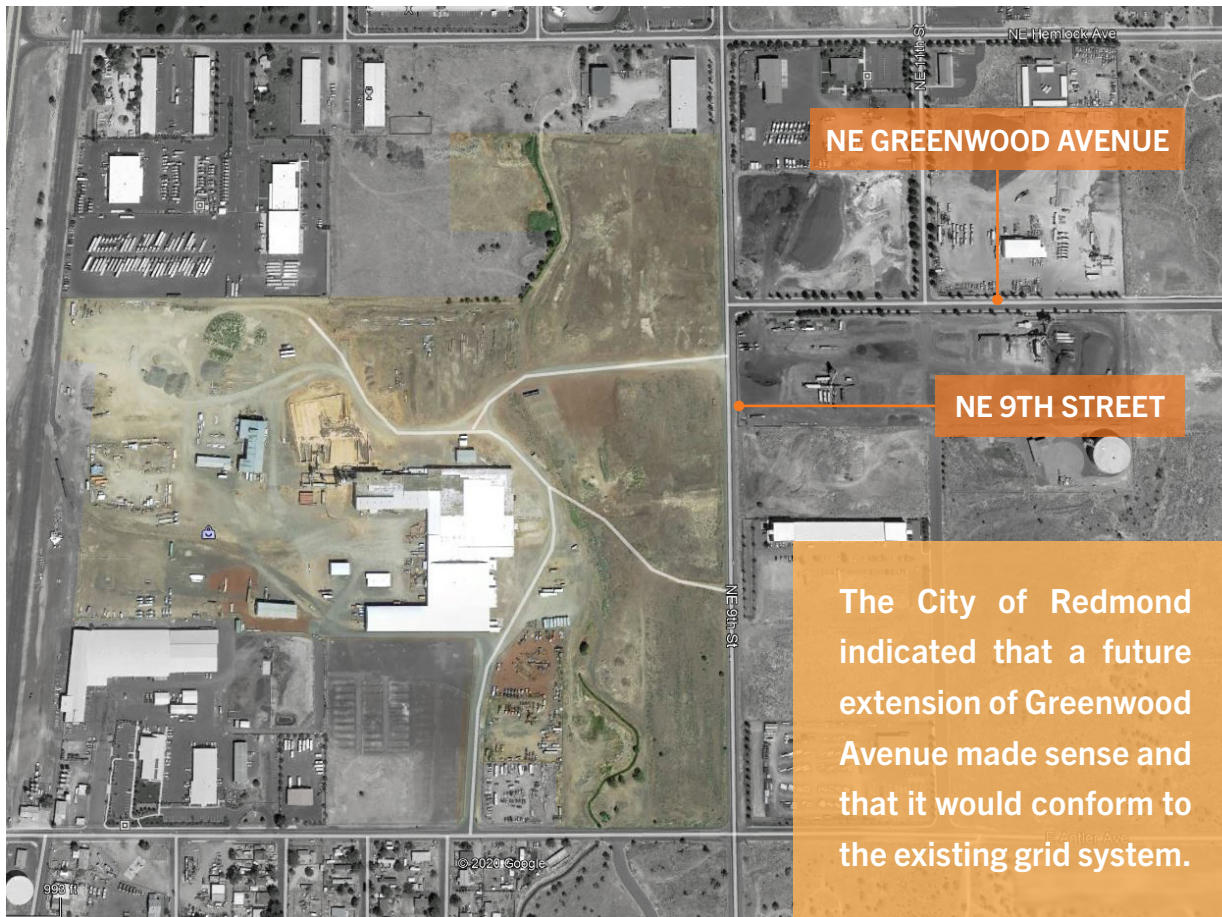
LOT 1 & 2 MUST BE SOLD TOGETHER.

LOT 10 & 12 MUST BE SOLD TOGETHER.

PROPERTY OVERVIEW | 601 E ANTLER AVENUE, REDMOND, OREGON

The Redmond Industrial Park is Redmond's largest industrial park totaling more than 73-acres of land on 12 separate tax lots, of which several lots to the east are now for sale. Originally owned and operated by Crown Pacific as a lumber yard, the property was acquired in 1996 by Maynard & Jacolyn Alves. Together, over the past 24 years, they have worked to support industrial users requiring various leasing needs.

Below is a representation of the whole Redmond Industrial Park property, see page 4 for specific lots currently listed.



ZONING

M-2 Heavy Industrial Zoning provides industries that have a more pronounced impact on the urban environment because of noise, smoke, air, and other emissions or because of traffic and other operating characteristics associated with these industry types.

A wide range of Industrial and Commercial uses for M-2 include:

- Commercial Manufacturing and Warehousing
- Auto Repair and Servicing
- Vehicle Storage and Parking
- Towing Yard
- Aircraft Services and Maintenance
- Batch Plants
- Distribution Centers
- Medical Research Facility
- Heavy Equipment Sales
- Contractor Services
- ... and more

FUTURE DEVELOPMENT

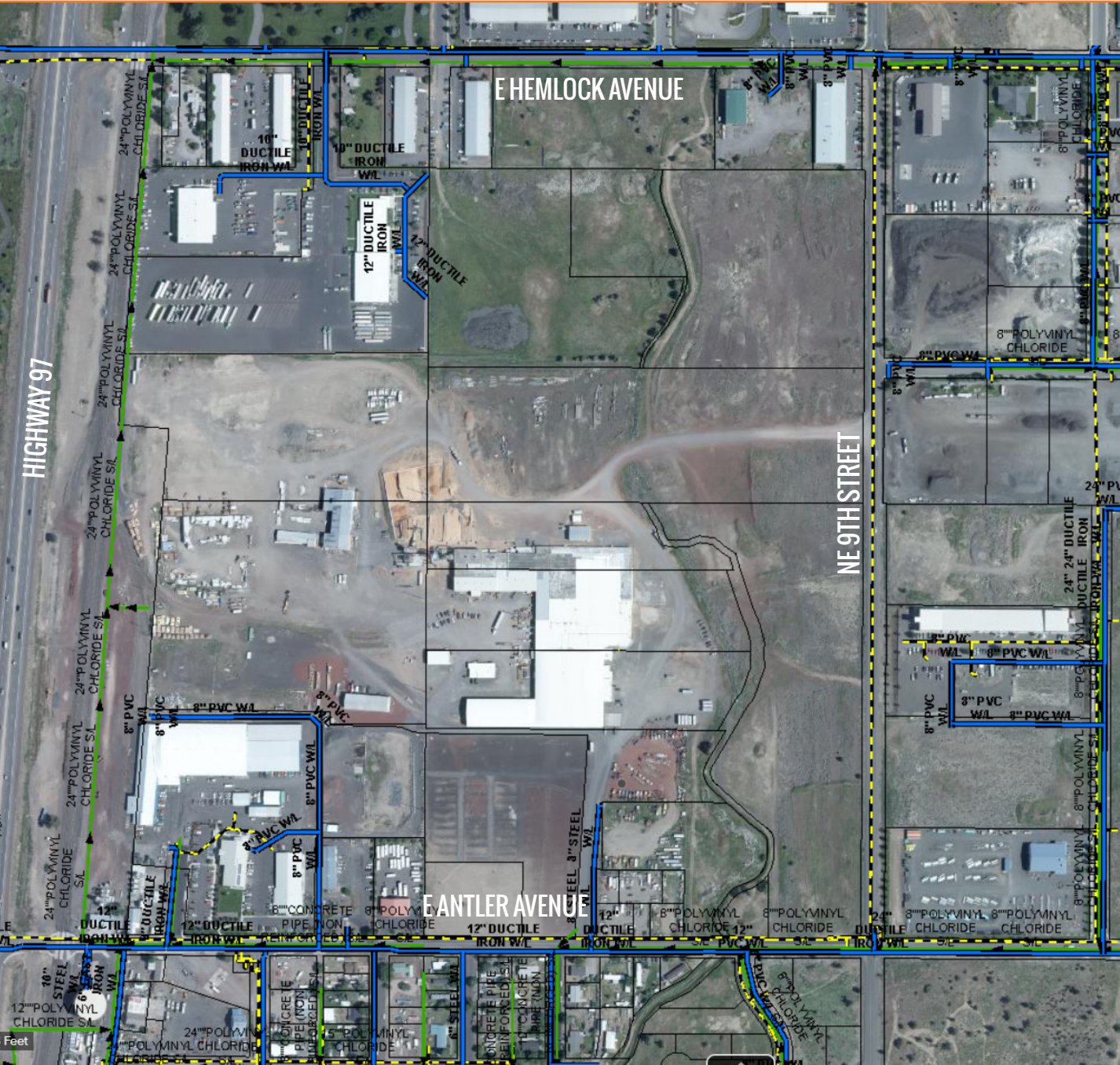
The Seller is currently working with the City of Redmond and local engineer to gain access from:

- NE Greenwood Avenue for Lot 2 & Lot 3
- NE 9th Street for Lot 10

Utilizing a 35% building to land coverage ratio can be applied throughout the available lots.

Because there are multiple tax lots, future development can be completed in a phased approach.

UTILITIES OVERVIEW



UTILITY LEGEND

Water



Sewer



Natural Gas



LOCATION, HIGHWAY TRANSPORTATION ACCESS, AND RAIL/UTILITY SERVICES

The property is located just two blocks east of State Highway 97 with excellent truck access to both northbound and southbound Hwy 97. The property also provides excellent access to State Highway 126 which connects to State Highway 20 providing a transportation and distribution network to Boise, Idaho and beyond.

The industrial park is located 1.56 miles from the Redmond Airport and 0.75 miles from downtown Redmond.

We have also confirmed with the City of Redmond that an additional access point can be constructed at the northeast corner of the property extending NE Greenwood Avenue west into the property.

- This site includes a BNSF rail spur ready to be reestablished to the Oregon Trunk Line property providing rail access to the Burlington Northern Santa Fe Railroad.
- Three Phase, 480-volt 2000 amp electrical service is currently provided, and per our conversation with Pacific Corp, additional amperage can be delivered to the property in under 9 months.



CENTRAL OREGON MARKET OVERVIEW

Welcome to Central Oregon where the commute times are short and breathtaking views await you at every turn. The region features dramatic snow-capped mountain ranges and high desert plateaus within Deschutes, Crook, and Jefferson counties.

Located halfway between San Francisco and Seattle, the hottest small metropolitan market in the U.S. is Central Oregon. In the last decade the region has seen some of the highest sustained GDP growth, job growth and population growth. With these factors in mind, The Milken Institute has named the region the best small metropolitan in the nation three years in a row – a feat no other location has ever received.

Central Oregon is pulling extraordinary talent and capital, fostering a diverse and highly entrepreneurial business ecosystem. Lured by natural scenic beauty and big city amenities (world-class health care, education, dining) without big city costs or hassle, people are learning that having a true work-life balance is possible. Employees are happier; companies are more innovative and capital-efficient. All in a region dominated by small to mid-sized firms that compete globally – and win.

244,560

REGIONAL POPULATION

*2020 estimates from
Portland State University*

116,665

REGIONAL LABOR FORCE

*Seasonally adjusted total for Q4 2019
from Oregon Employment Department*

#6

**FASTEST POPULATION
GROWTH IN THE U.S.**

U.S. CENSUS, 2018

WHY CENTRAL OREGON?

Central Oregon has been among the fastest growing regions anywhere in the U.S.

In-migration has been the dominating factor in the region's growth with approximately 7,000 new residents moving to the area from all over the country every year. At the same time, the region's ability to attract young families has resulted in strong birth rates.

When compared against its neighbors to the north and south, Oregon's overall business costs rank significantly lower. Average electricity rates, natural gas rates, state and local sales tax rates, and business tax climates in particular are significantly lower than the national average.

For a relocating business, Central Oregon has a reputation for welcoming new companies without sacrificing workforce, talent, quality healthcare, transportation, or infrastructure.

GROWTH

#2

**FASTEST JOB GROWTH
IN THE U.S.**

BLS, 2017

DESCHUTES COUNTY

#1

**COUNTY RECEIVING MOST
INVESTMENT IN OREGON**

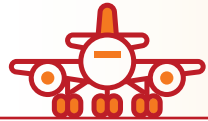
SMARTASSET, 2020-

The combination of a collaborative culture, a supportive attitude among government and economic development agencies, plus a location that attracts talent and investment all help Central Oregon compete nationally.

"BEND ENJOYS A TRULY COLLABORATIVE ENVIRONMENT. Everyone is not only supportive of each other, but excited to see one another grow. We share the same trails, rivers and slopes and ultimately share a similar vision to help Bend succeed."

—Scott Allan, GM, Hydro Flask

TRANSPORTATION



Air

Redmond Municipal Airport (RDM) provides commercial air service with 26 daily round-trip flights to Denver, Los Angeles, Mesa, Phoenix, Portland, Salt Lake City, San Francisco, Chicago, Las Vegas, and Seattle via six carriers (Alaska, Allegiant, American, Delta, Sun Country Airlines, and United).



Rail

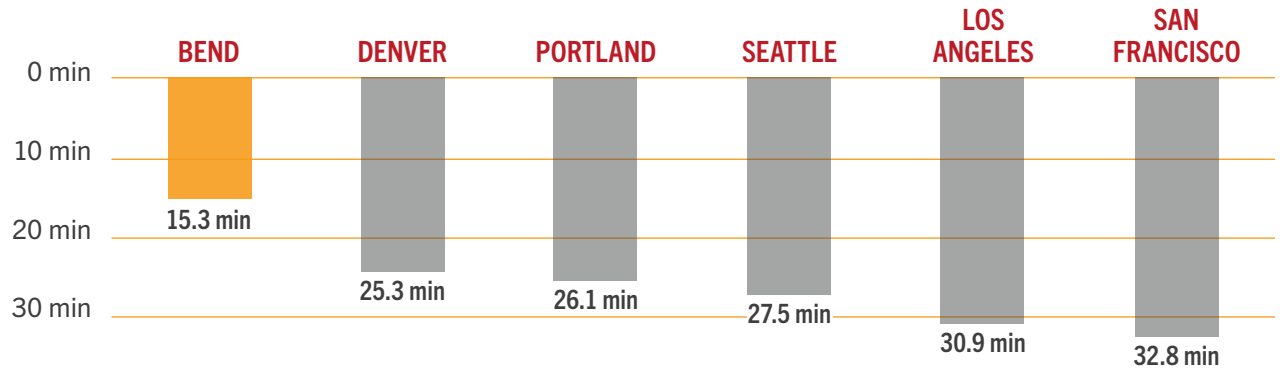
Burlington Northern-Santa Fe (BNSF), Union Pacific (UPRR) and the City of Prineville Railway (COPR) provide direct connections for shipping to any market in the United States, Canada, and Mexico.



Freight

U.S. Highways 97 and 20 are two of the state's major trucking routes, with access to major metro areas with connections to Interstate 5 (N-S) and Interstate 84 (E-W).

AVERAGE COMMUTE TIMES THE CENTRAL OREGON AVERAGE COMMUTE TIME IS 21 MINUTES EACH WAY, SAVING THE AVERAGE WORKER OVER ONE WORK WEEK PER YEAR! ([CENSUS.GOV 2019](https://www.census.gov))



TRAVEL TIME/
DISTANCE

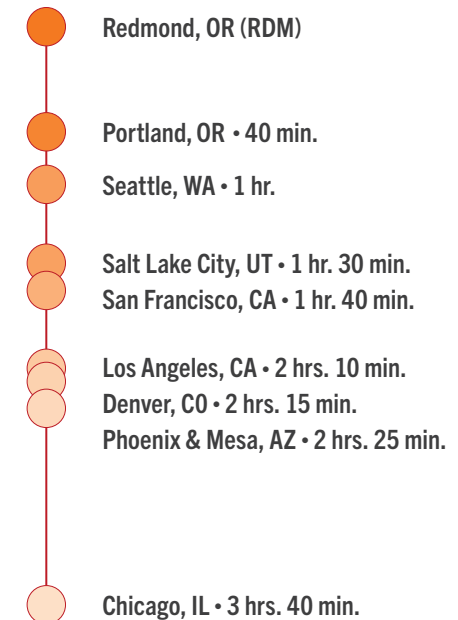
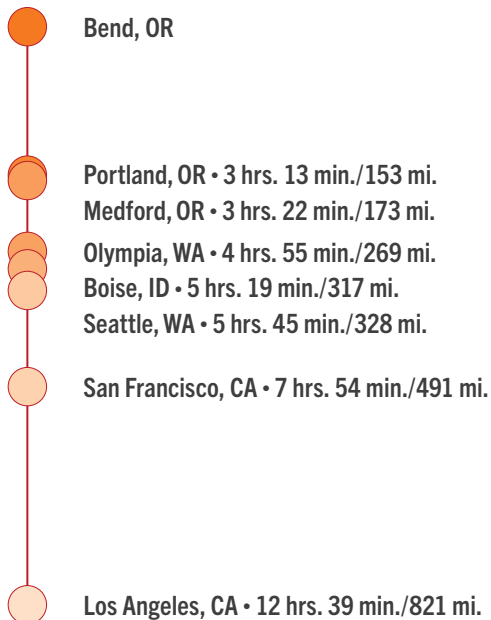


CAR

TRAVEL TIME



AIR



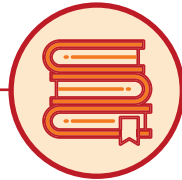
SERVICES AND INFRASTRUCTURE

Utilities



Because most of our region has been built new in the past two decades, our telecommunications infrastructure is one of the Northwest's most technologically advanced, meeting business and telecommuting requirements for capacity, redundancy and reliability.

Education



Central Oregon is well-recognized for its high level of education, with some of the best K-12 public schools in the nation. In 2018, the Bend-La Pine school district's average SAT scores surpassed the national average by over 100 points. Additionally, our higher education opportunities abound. From Oregon State University-Cascades ongoing expansion, to Central Oregon Community College's four campuses in the region, there are opportunities for all to obtain a quality education.

Healthcare



Top quality healthcare is one of Central Oregon's crown jewels. St. Charles Health System is the largest healthcare provider in the region, and is also the largest employer with over 4,400 employees across the tri-county area. A network of more than 100 clinics and specialty practices further support the community.

LIFESTYLE

Central Oregon is blessed with a rare mix of city amenities and restful isolation. It offers the slower speed of a small town with a medical community and infrastructure not normally seen in a region of its size. Additionally, Central Oregon residents maintain a work/life balance that is difficult to achieve elsewhere.

#1

BEST PERFORMING SMALL CITY THREE YEARS IN A ROW!

—MILKEN INSTITUTE, 2016, 2017, 2018

30 GOLF
COURSES



#1

SMALL CITIES FOR BUSINESS AND CAREERS

—FORBES, 2016

MILES AND
MILES
OF TRAILS



BEST

PLACES TO LIVE ON \$55,000

—SMARTASSET, 2017

THRIVING ARTS
AND
CULTURE SCENE



#8

BEST PLACES TO LIVE IN THE U.S.

—NEW YORK POST, 2016

33 BREWERIES
AND COUNTING



BEST

MULTI-SPORT TOWN

—OUTDOOR MAGAZINE, 2017

300 DAYS
OF SUNSHINE





FRATZKE COMMERCIAL REAL ESTATE

541-306-4948

FRATZKECOMMERCIAL.COM

963 SW SIMPSON AVENUE | SUITE 220
BEND, OREGON 97702

BRIAN FRATZKE, CCIM

PRINCIPAL

BRIAN@FRATCOMMERCIAL.COM

TOM TAPIA, CCIM

PRINCIPAL

TOM@FRATCOMMERCIAL.COM

NICK VAUGHN

BROKER

NICK@FRATCOMMERCIAL.COM

DAN STEELHAMMER

BROKER

DAN@FRATCOMMERCIAL.COM

CHRIS COCHRAN

DIRECTOR OF PROPERTY MANAGEMENT

CHRIS@FRATCOMMERCIAL.COM

BRIANNA METZLER

OFFICE ADMINISTRATOR

BRIANNA@FRATCOMMERCIAL.COM

WITH YOU EVERY SQUARE FOOT OF THE WAY

