

FOR SALE  
DOWNTOWN DEVELOPMENT LAND



FOR SALE  
0.32 AC MIXED-USE DEVELOPMENT LAND

DOWNTOWN BEND  
828 NW Hill Street | Bend, Oregon

RENDERING



Located on the corner of Hill Street and Hawthorne Avenue, this 0.32 acre parcel of land zoned Mixed-Use Urban (MU), provides a great spot to build a 65 foot high multi-family/mixed-use building.

- Utilities stubbed to the site and also located in the street
- City of Bend water and sewer
- System Development Credits \$43,008
- Located three blocks from downtown Bend, Oregon

- Offering at \$1,995,000**
- Opportunity Zone
  - Enterprise Zone
  - Site at Grade



**BRIAN FRATZKE**  
CCIM, PRINCIPAL  
541-480-2526 [ C ]  
BRIAN@FRATCOMMERCIAL.COM



**DAN STEELHAMMER**  
BROKER  
541-480-5756 [ C ]  
DAN@FRATCOMMERCIAL.COM



With You Every Square Foot of the Way.

**Brian Fratzke, CCIM, Principal**  
brian@fratcommercial.com | O 541-306-4948 C 541-480-2526

**Dan Steelhammer, Broker**  
dan@fratcommercial.com | O 541-306-4948 C 541-480-5756

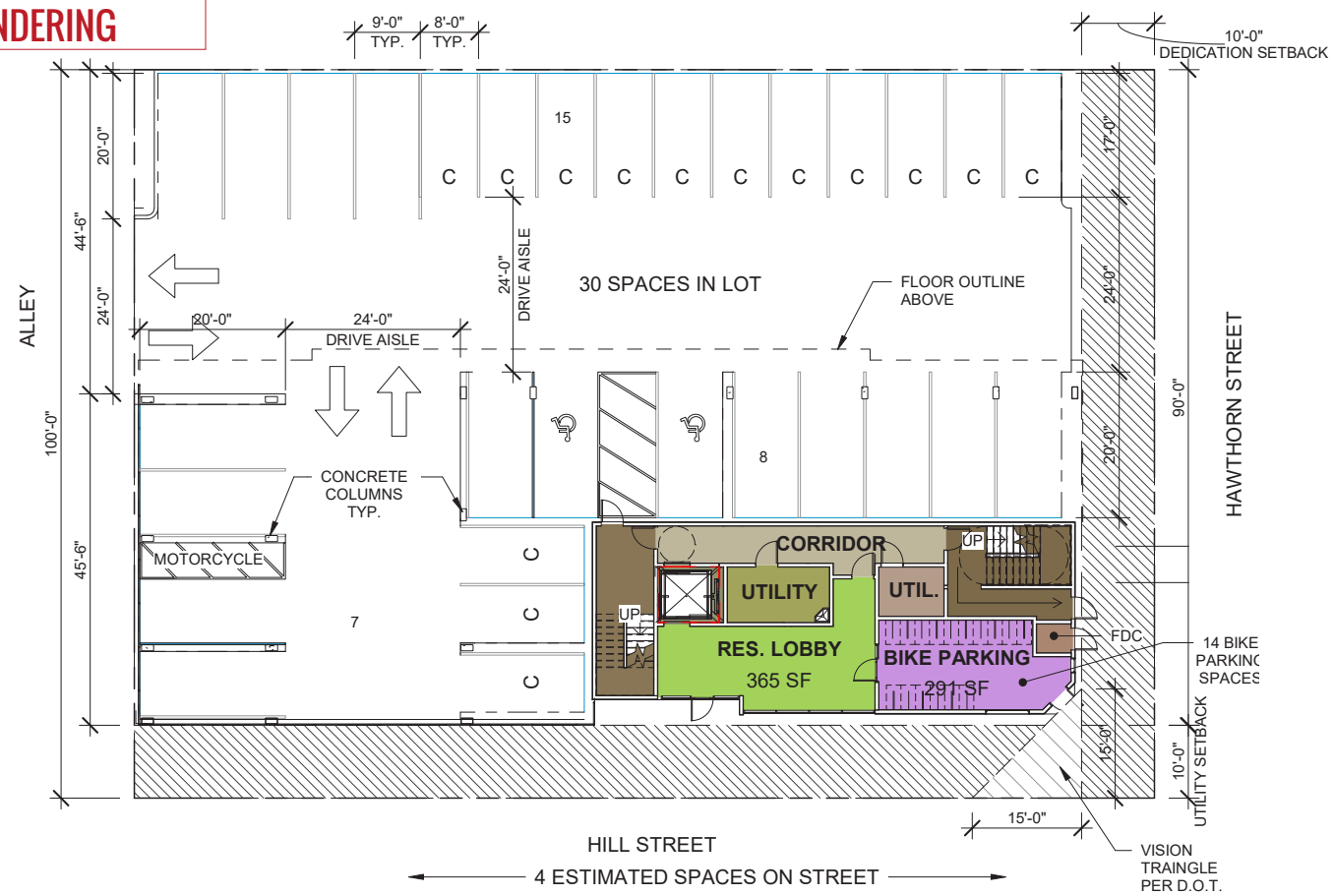


963 SW Simpson Ave Suite 220 | Bend, OR 97702  
541-306-4948 | www.fratzkecommercial.com

**DISCLAIMER:** This information is from sources we deem reliable, but for which we assume no liability. This is an exclusive listing. The information contained herein is given in confidence with the understanding that all negotiations pertaining to this property be handled through Fratzke Commercial Real Estate. All measurements are approximate.



RENDERING



RENDERING

