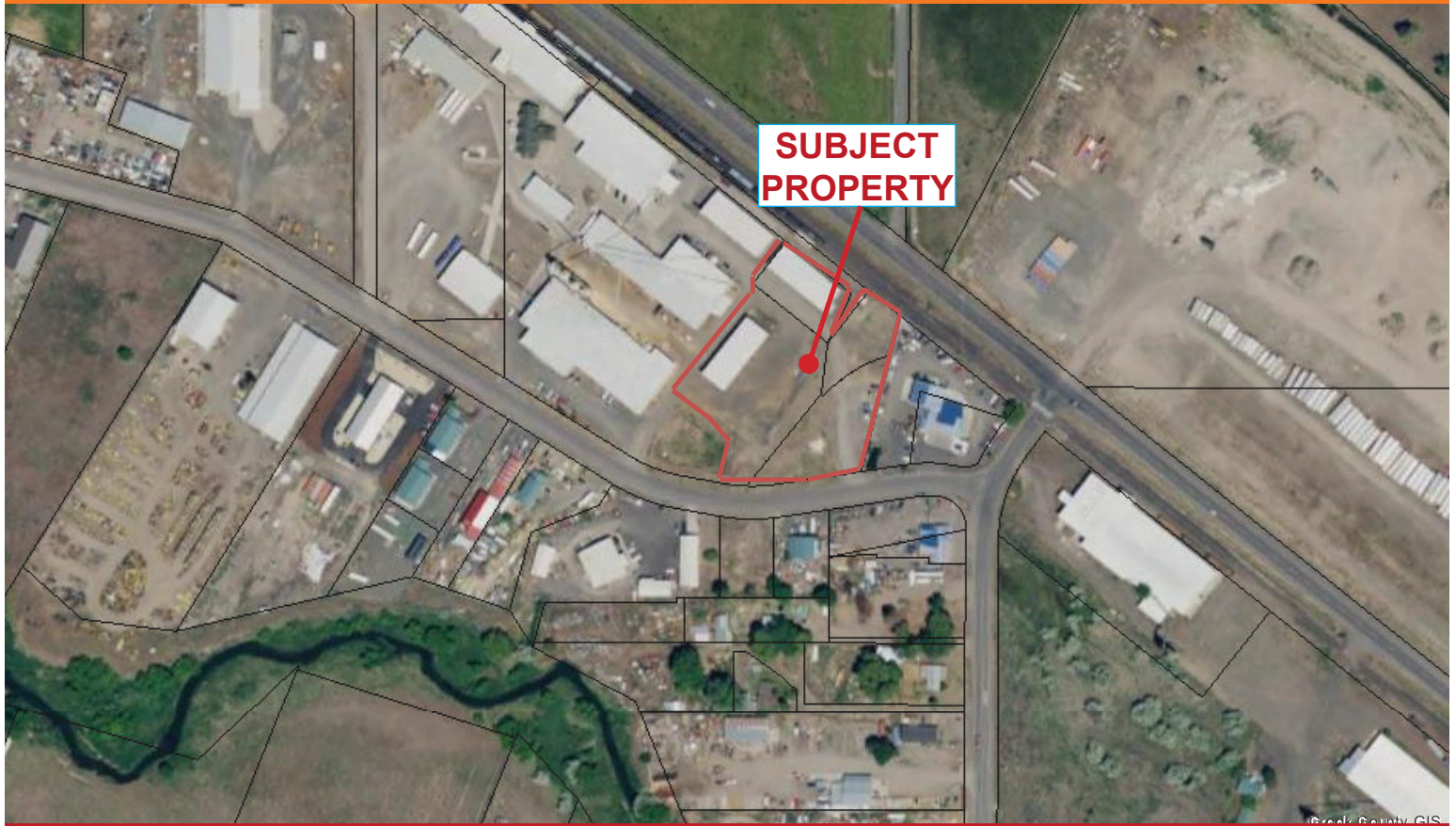


INDUSTRIAL LOT

NW Industrial Park Road | Prineville OR



Lot consolidation in process. 2.5 +/- acres of industrial land with 2 existing 7,500 +/- SF steel storage buildings, roof and structure only.

Located in an industrial park zoned for general industrial activities.

Utilities in the street. Currently anticipate 2-3 months to complete survey work. Contact listing broker for more information.

Offered at \$420,000

- 2.5 +/- acres
- 2 existing steel storage structures (roof & structure only)
- Zoned M-2

Dan Steelhammer, Broker

dan@fratcommercial.com | O 541.306.4948 C 541.480.5756



963 SW Simpson Ave., Suite 220 | Bend, OR 97702
541.306.4948 | www.fratzkecommercial.com

FOR SALE
INDUSTRIAL LOT



DAN STEELHAMMER
BROKER

541.480.5756 [C]
DAN@FRATCOMMERCIAL.COM



With You Every Square Foot of the Way.

DISCLAIMER: This information is from sources we deem reliable, but for which we assume no liability. This is an exclusive listing. The information contained herein is given in confidence with the understanding that all negotiations pertaining to this property be handled through Fratzke Commercial Real Estate. All measurements are approximate.