

FOR LEASE  
INDUSTRIAL SPACE

## CARMEN LOOP INDUSTRIAL

20700 Carmen Loop | Bend OR



Suite 130 at 20700 Carmen Loop is a 1,650 +/- RSF industrial suite with one (1) small office, one (1) restroom, and one (1) fourteen (14) foot roll up door. Also has three (3) glass panels in the roll up door. The building is fully sprinkled.

Ownership includes a Licensed Real Estate Broker. Building disclosure condition by licensed realtor. Broker must attend all showings.

**Lease Rate: \$0.90/SF/Mo NNN**

- Suite 130: 1,650 +/- SF
- Zoned IL - Industrial Light

### Brian Fratzke, CCIM, Principal

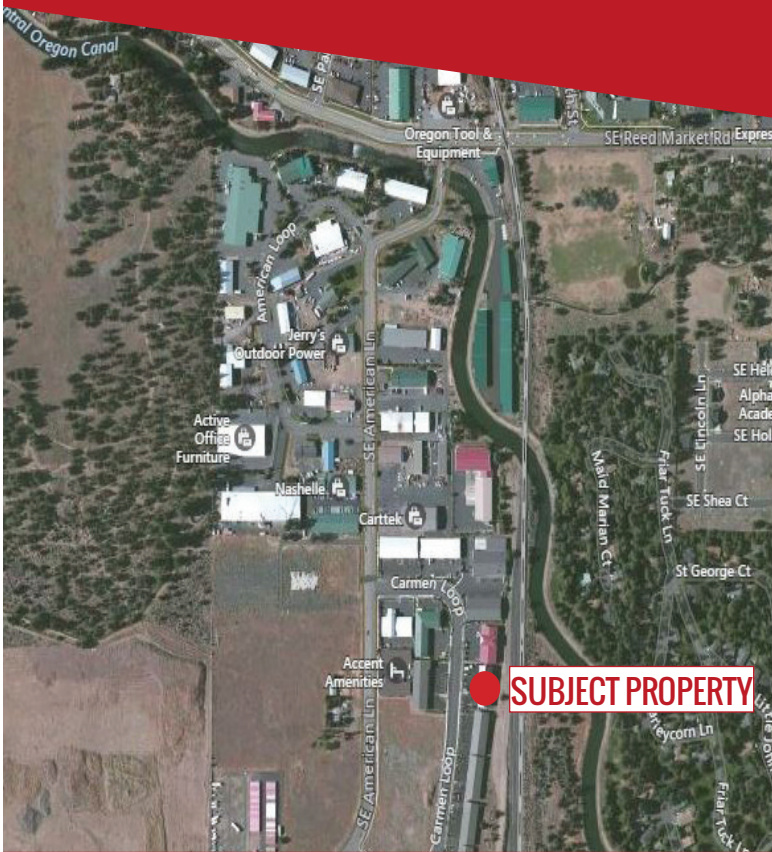
brian@fratcommercial.com | O 541.306.4948 C 541.480.2526



963 SW Simpson Ave., Suite 220 | Bend, OR 97702  
541.306.4948 | [www.fratzkecommercial.com](http://www.fratzkecommercial.com)

FOR LEASE

# CARMEN LOOP INDUSTRIAL



**BRIAN FRATZKE**  
CCIM, PRINCIPAL  
541.480.2526 [C]  
BRIAN@FRATCOMMERCIAL.COM



With You Every Square Foot of the Way.

**DISCLAIMER:** This information is from sources we deem reliable, but for which we assume no liability. This is an exclusive listing. The information contained herein is given in confidence with the understanding that all negotiations pertaining to this property be handled through Fratzke Commercial Real Estate. All measurements are approximate.